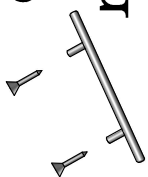


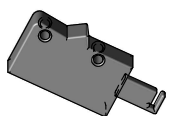
A  
x8



G  
x2



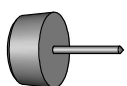
LA  
x2



B  
x8



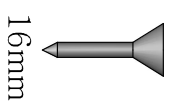
H



C  
x30  
20mm



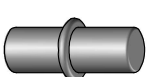
I



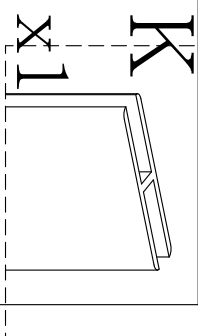
D  
x8



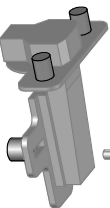
J  
x4



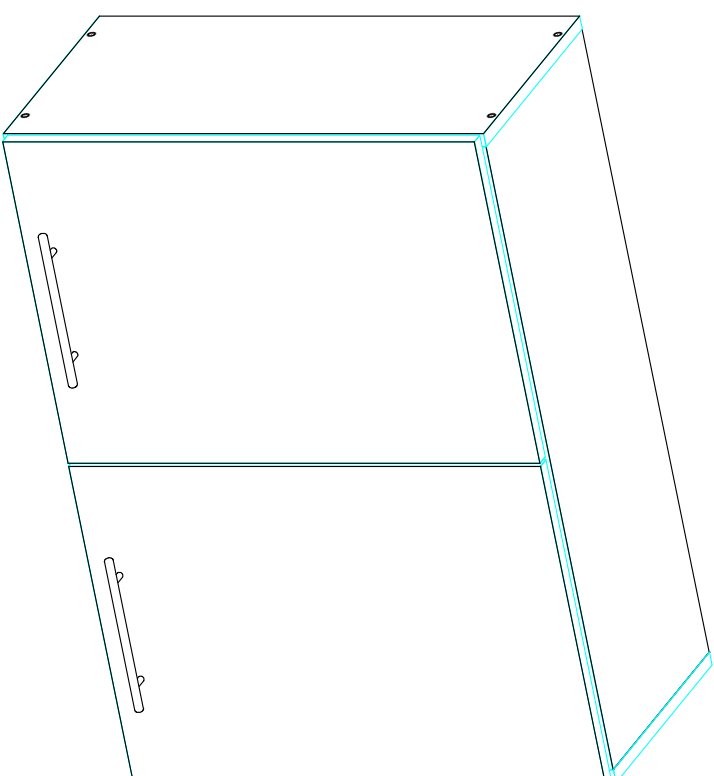
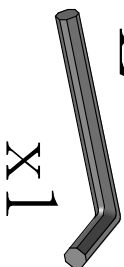
E  
x4  
30mm



F  
x4



L



Montážny návod



1/1

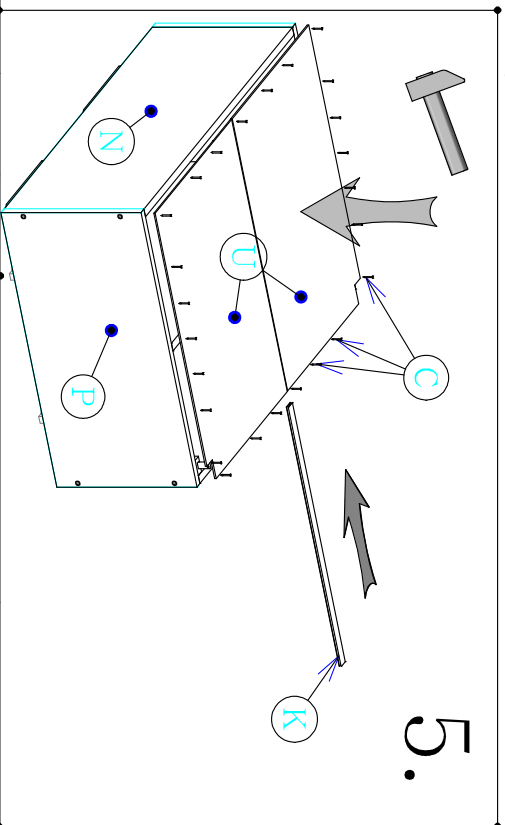
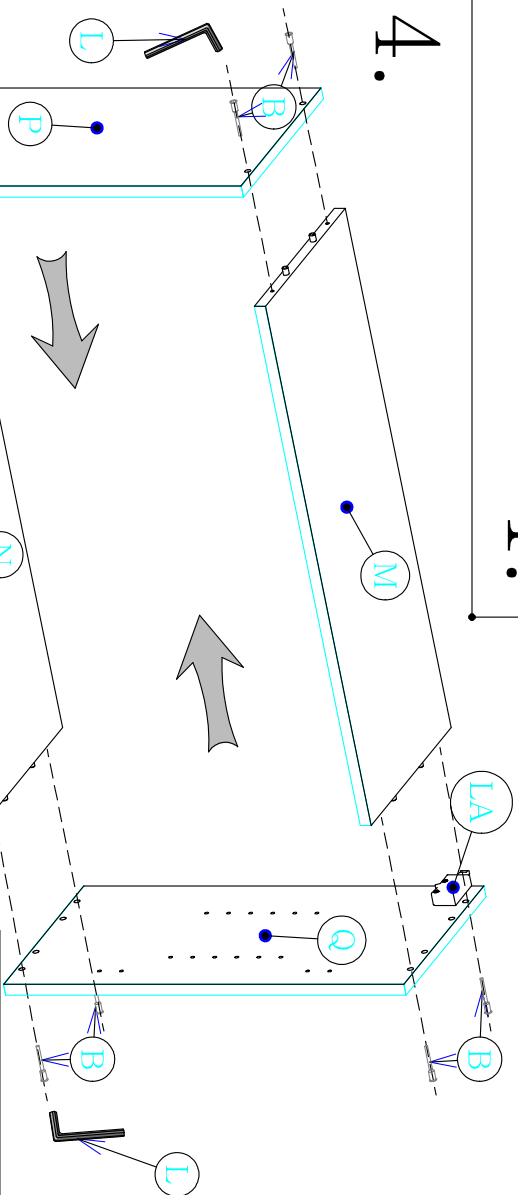
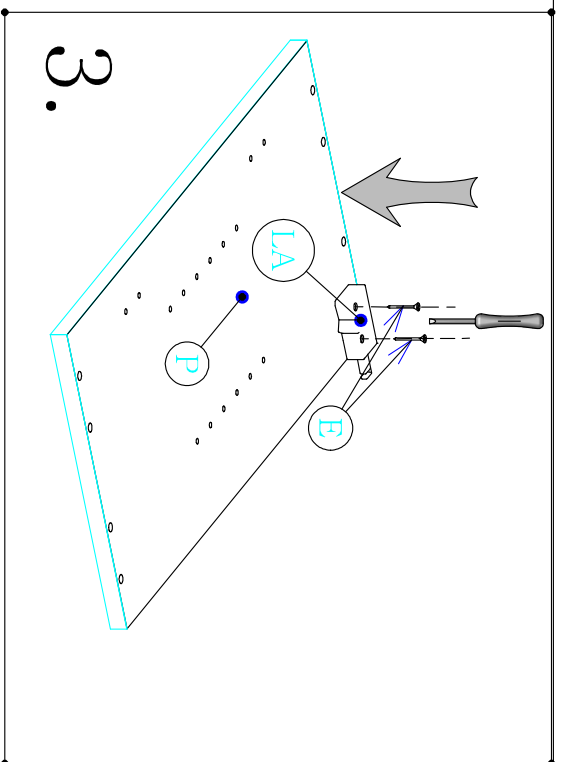
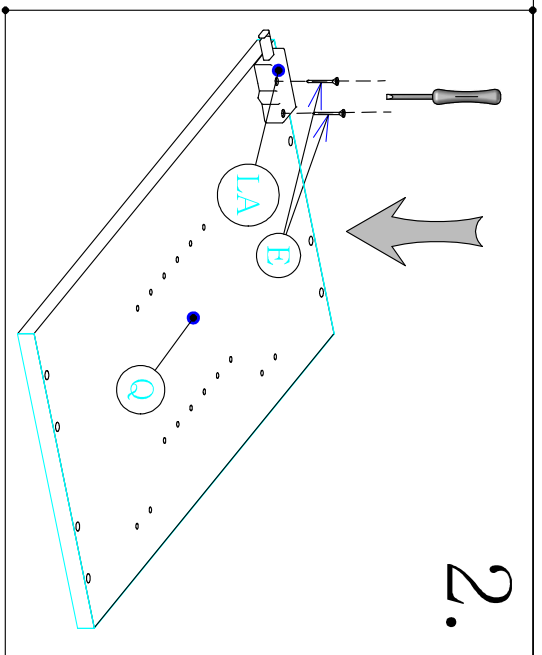
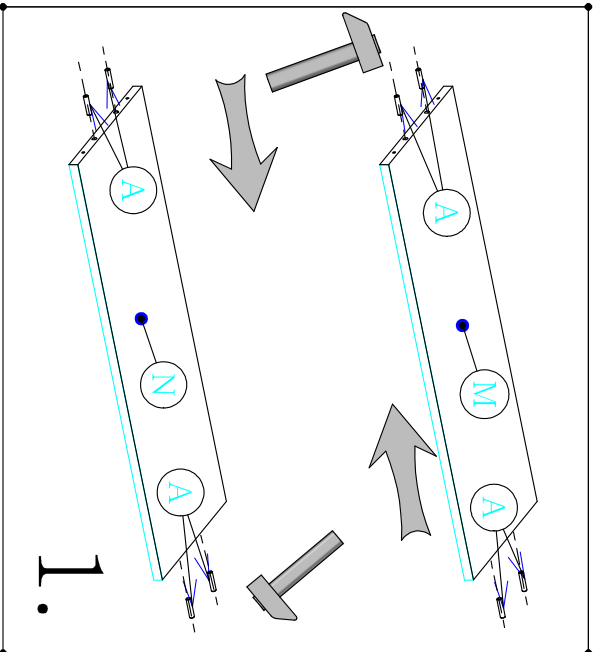
G60\_


Je potrebné použiť kladivo a šraubovák.

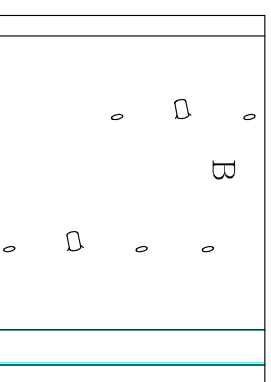
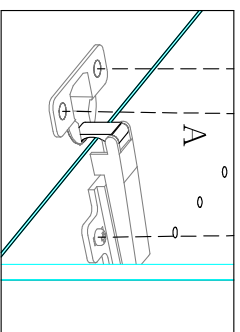
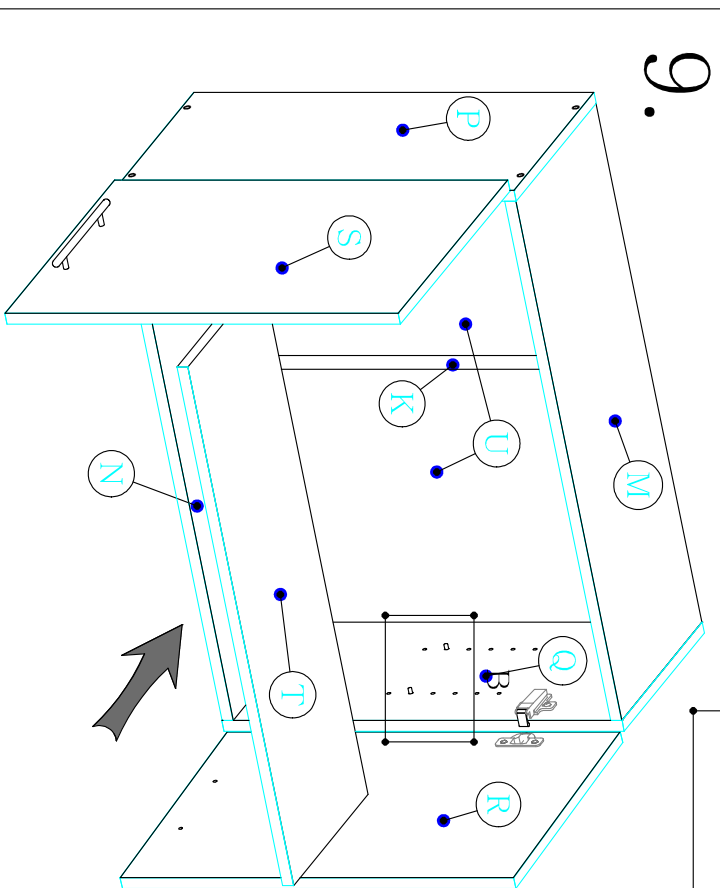
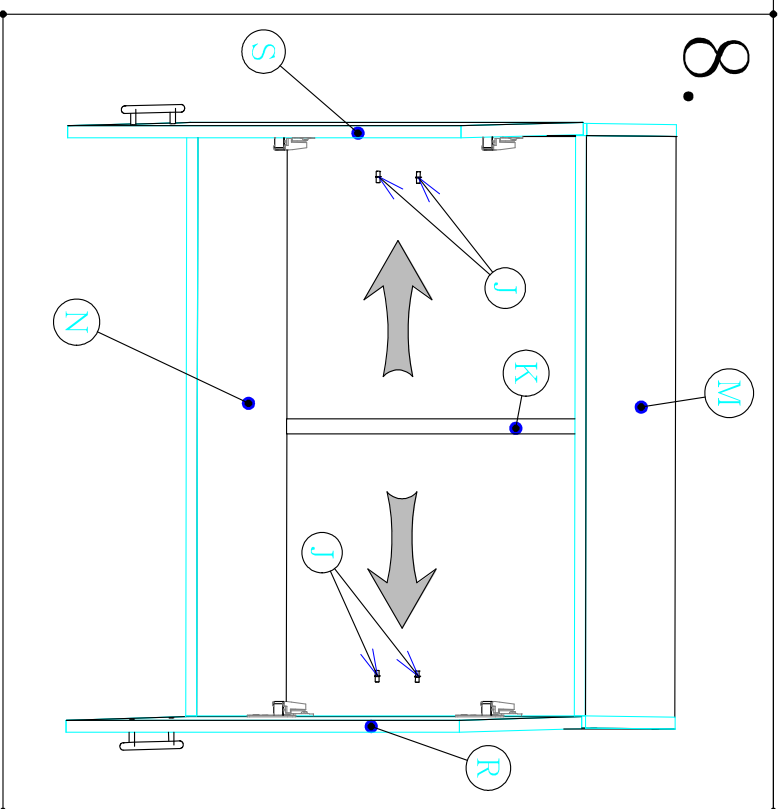
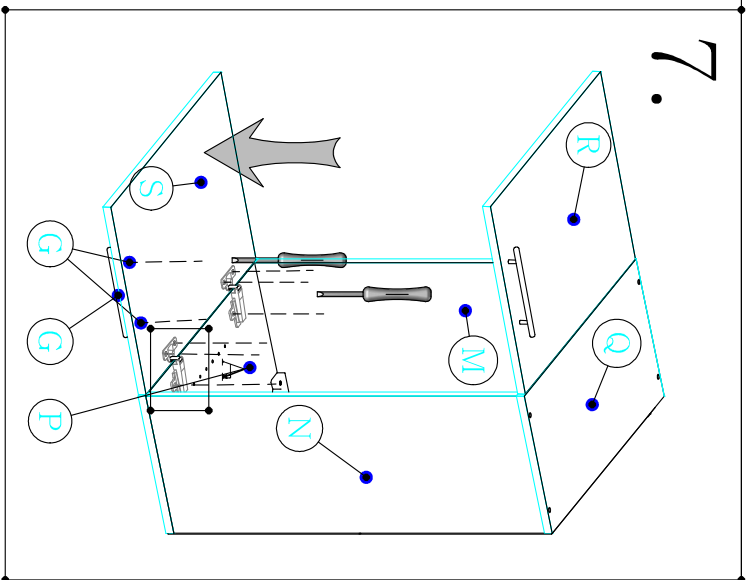
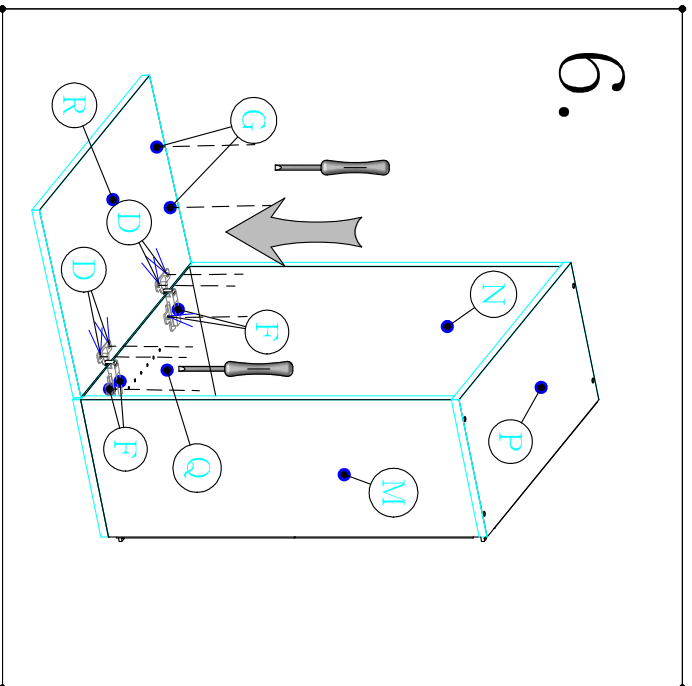
Cyra

V prípade potreby použite vrtáčku.

Skrinky montujte podľa krokov v montážnom návode.



Montážny návod			1/2
G60	Cyra		
<p>Je potrebné použiť kladivo a šraubovák.</p> <p>V prípade potreby použite vrtáčku.</p> <p>Skrinky montujte podľa krokov v montážnom návode.</p>			



Montážny návod



2/2

Je potrebné použiť kladivo a šraubovák.

V prípade potreby použite vrtáčku.

G60  
Cyra  
260cm

Skrinky montujte podľa krokov v montážnom návode.